



Presidents Report 2025

This year The Compassionate Friends commemorated forty years of continuous service in Queensland. The Compassionate Friends was founded in Australia by Lindsay and Margaret Harmer in Melbourne in 1978, with a branch opening in Queensland the following year, but it was not until mid 1985 that it became an ongoing organisation in its own right.

This significant milestone was recognised at lunch event in July 2025, and we were honoured to have several members from the early days of TCFQ attend. In particular, Leonie Hay who was instrumental in getting TCFQ going, after her son Dean passed away in March 1985. There was no TCF in Qld at that time, and Leonie together with a social worker Dianne Culpan got TCF reformed in May 1985 with support meetings in Brisbane from July onwards.

The event was also attended by past presidents Sue Norman and Julie Williams and life members Marion Downey, Lyn and Graeme Macklin and Helen Alcock. Like us all, they had each been devastated by great personal tragedy, but had found the strength and commitment to give back to our TCF community and to support bereaved families in Queensland over a number of years.

The 40th Anniversary event was an opportunity to see the span of our history and support over that period and to reflect on some of the changes. Our first newsletters were produced on a typewriter and mailed to around 30 members. Today we send nearly 750 with over 90% delivered electronically by email.

Despite the many changes over the years, our core values and ethos of peer support from lived experience remain the same. Now, as then, TCFQ is almost entirely a volunteer run organisation. All of our support services are provided through the efforts of members who recognise the value of what we do, and commit their time and resources to ensure that bereaved families can benefit from their experience and support.

I am honoured to have been part of the TCFQ board since 2019 and TCFQ President since early 2021. I will be standing again for President this year, but it will be my last year in the position. By next year I will have been in an executive position with TCFQ for 7 years and it is time for new leadership to step up and guide our ongoing operation. TCFQ is only able to carry on providing peer support services by continuing the tradition of volunteering from within our TCFQ membership.



Member Services

Our support services include first contact with the newly bereaved (largely through Police Referrals), and our in-person support groups, telephone support and grief workshops. An overview of our service statistics for the year is



These services are provided through the continued dedication of volunteers from within our membership who facilitate the support groups, provide on-call support to the national helpline or as a regional phone contact, produce the newsletter and make and send anniversary cards to our members.

For the 2025 year we recognise the efforts of the following members and volunteers

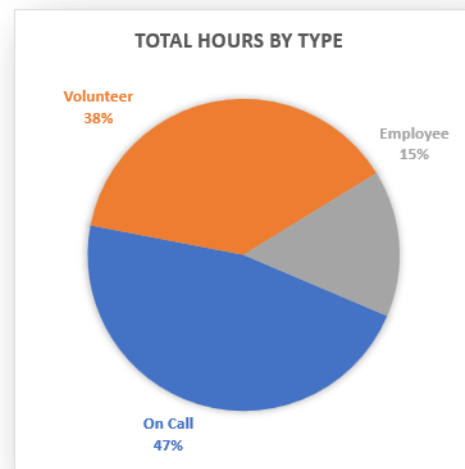
Annie Moritz	Judy Jensen	Melissa Keogh-Lancaster
Brian Wilson	Julie Doolan	Michele Richardson
David Murray	Karen Keleher	Olwen Schubert
Eric Retra	Kelly Briant	Peter Hobson
Erin Hobson	Ken Massey	Robyn Buiters
Helen Alcock	Lauren Hanson	Rosie Murray
Helen Harm	Linda Retra	Steve Reading
Jackie Massey	Lorraine Conolly	Tony Vayro
Jan Condo	Lorraine Edgley	Trevor Taylor
Jen Reading	Lyn Macklin	Wendy Boulding
Joy Van Raalte	Maria Cramer	Wendy Goulden



I thank all our volunteers, particularly those in regional areas who are often operating on their own to provide support in those areas. Special thanks also to Eric and Linda Retra (parents of Jeanine) who are stepping down as support group leaders. They have been members and volunteers with TCFQ for several years and started facilitating support meetings in 2017. They were also regulars at our Bunnings sausage sizzle fundraisers and donated both the coffee table and the hot water urn that we use regularly at our Brisbane support meetings.

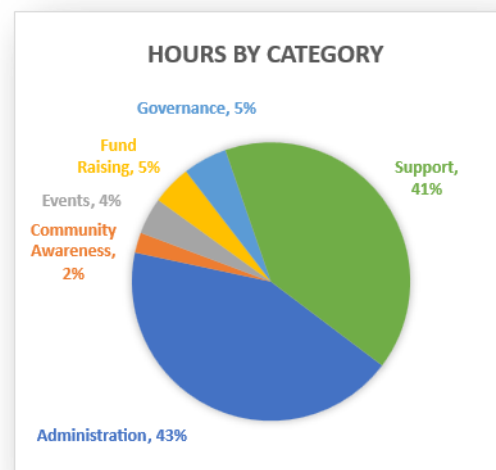
The total hours from staff and volunteers for TCFQ for the 2024/25 financial year is below with 85% from volunteers

Labour Type	Total Hours
On Call	3,267
Volunteer	2,677
Employee	1,062
Total	7,005



The breakdown of the non-oncall hours shows over 40% is in direct support of members

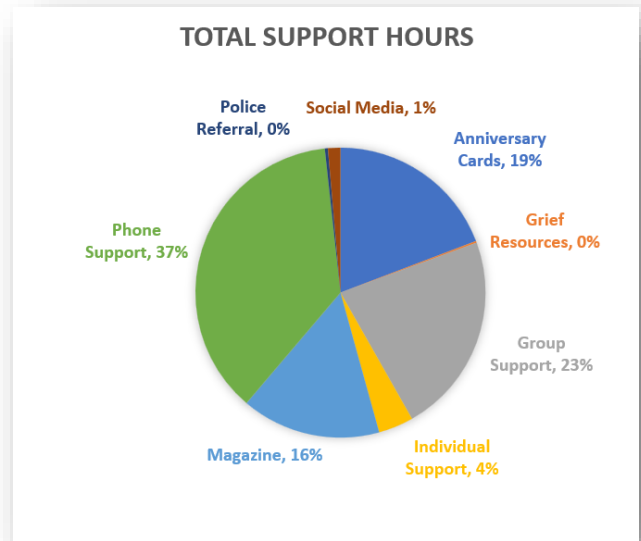
Service Activity	Total Hours
Administration	1,611
Community Awareness	88
Events	159
Fund Raising	171
Governance	192
Support	1,518
Total	3,738





A further breakdown of the support activities is

Service Activity	Total Hours
Anniversary Cards	292
Grief Resources	3
Group Support	340
Individual Support	59
Magazine	236
Phone Support	562
Police Referral	5
Social Media	21
Grand Total	1,518



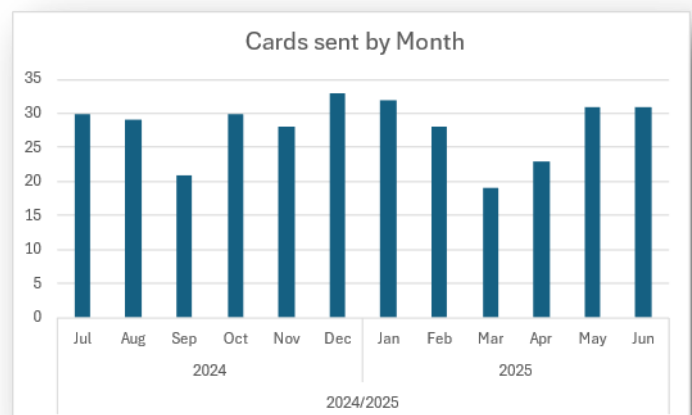
Support groups and Regional Support

During the year, we continue our person support meetings in Brisbane, Caloundra, Hervey Bay and Toowoomba. We also held some “pop up” group support meetings in both Brisbane North (Albany Creek) and Brisbane South (Cleveland).

We continue to provide regional support through telephone contacts in the Lockyer Valley, Gympie, Mackay, Townsville and the Gold Coast.

Card Making

Our volunteer card makers made over 250 cards for the year which were sent to members on the anniversaries of their children, siblings and grandchildren. We get several comments back from members telling us how much these cards mean to them, and our thanks to the stalwarts who have provided this service for many years – Olwen Schubert, Lyn Macklin and Joy Ran Raalte.





Newsletters

We printed and posted over 400 newsletters and emailed over 3,700 for the year.



Phone Support

We changed our national phone support in June 2024 from 24 hour to 10am-4pm and 7pm-10pm every day. This year TCFV also reduced their support hours to 9am-10pm, 7 days a week. Like us, this was in recognition that our services are provided by volunteers and that there are already other 24 hour crisis support hotlines.

Over the year we received 262 calls to the support line. This is compared to 268 in 2023/24 and 343 in 2024/25.

Month	Support Calls
2024 Jul	25
Aug	17
Sep	21
Oct	14
Nov	32
Dec	29
2025 Jan	30
Feb	23
Mar	20
Apr	30
May	7
Jun	14
Total	262





Events and Fund Raising

During the year we ran several workshops run in conjunction with the Brisbane support group meetings. We also ran a number of annual member events and regular fundraising activities.

Month	Event
Jul-24	Workshop by Beth O’Brien on <i>Exploring Transcendental Connections</i>
Aug-24	Pizzas for Fathers Day
Oct-24	Xmas Craft Workshop
Nov-24	Annual Dia De Los Muertos event
Nov-24	Bunnings BBQ fund raiser
Dec-24	Annual Candle Lighting Service
Feb-25	Craft workshop with Rachel from 1,000 hearts – <i>How to make a pocket heart from felt</i>
Mar-25	Workshop presented by Donna McDonald – <i>Sorrow Informed Joy</i>
Apr-25	Workshop presented by Trish Carpenter
May-25	Bunnings BBQ fund raiser
May-25	Bereaved Mothers Day event
May-25	Annual Charity Golf Day
Jun-25	Annual Walk to Remember in New Farm Park

Candle Lighting

On Sunday 8th December 2024 we held our annual candle lighting as part of The Compassionate Friends worldwide event. This year we had around 75 family and friends join us at the Baptist Church in Annerley as well as another 20 joining the live stream of the event.

An edited video of the evening has been published to YouTube and can be viewed from our website at

<https://tcfqld.org.au/candlelight-service/2024>





Walk To Remember

Our 11th annual TCFQ Walk to Remember was held on Sunday 15 June 2024 at New Farm Park on Brunswick St in New Farm. It was another beautiful winters day in New Farm Park, ideal for the walk, and was a special day of remembrance for our children, siblings and grandchildren.



Charity Golf Day

The TCFQ Charity Golf Day was held in May at Keperra Country Club – and was another amazing result with a full contingent of teams. The event raised over \$13,000 for TCFQ. My heartfelt thanks to Brendan and Mick Ryan from Rhino Finance for continuing to organise and run the day on our behalf— they have been great supporters of TCFQ over a number of years. Thanks also to Helen Alcock for organising the gift vouchers as prizes, Jen and Steve Reading for getting everything organised and transported out to Keperra Country Golf Club (and cooking sausages for players on course!), and Julie Doolan and Erin Hobson for their help on the day.

We were honoured to have Life Members Lyn and Graham Macklin also attend on the day. Graham helped organise the event in its early days and it was also Graham who got the Ryan brothers involved through his connections in the finance industry.



Thank you to all players and sponsors of the day :

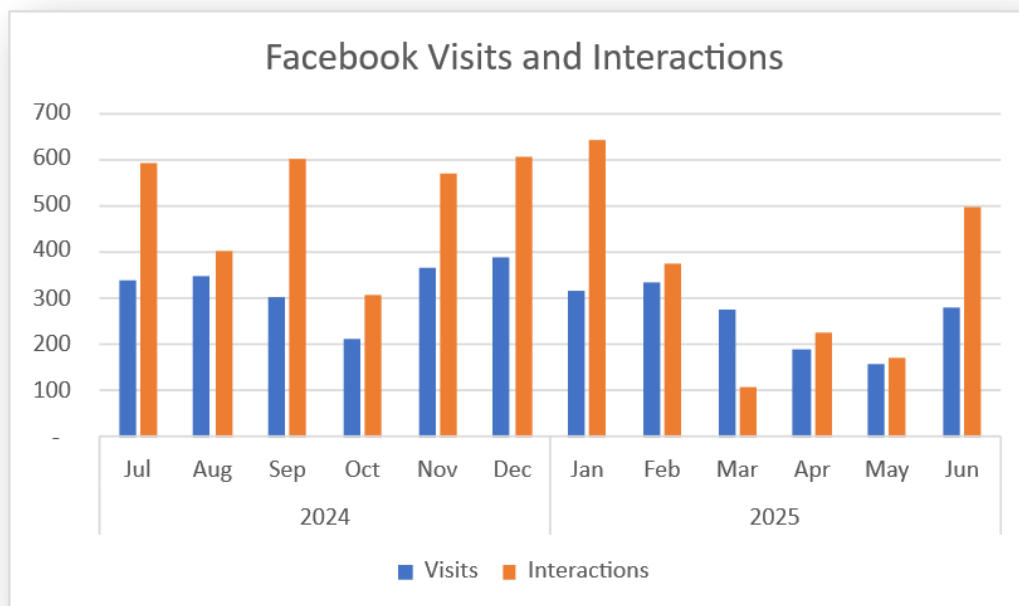
Rhino Finance	Tony Dang Pty Ltd	Chris Lynn
Multipli	Brisbane Heat	4WD Supa Centre
Chris Rose	Dan Murphy's	Royal Pines Resort
Pepper Finance	Keperra Golf Course	Merse Wellness
Resimac	SG Anthony Pty Ltd	Jack Sattler and Penrith Panthers
Flexi Commercial	SG Buderim Pty Ltd	Tim Ryan and Qld Reds
Trivision Pty Ltd	Asset Rental Group	Reece Robson and NQ Cowboys
Black and White Cabs	Nudgee Cemetery	Valley Pool & Gym
R and N Contractors (Qld)	Bunnings	Bakers Delight Arana Hills
SG Bakery Group	Shelair Refrigeration & A/C	Brisbane Racing Club
Hotel Grand Chancellor		



Social Media

This year our Social Media presence has been maintained through the efforts of Maria Cramer (mother of Rhys), David Murray (father of Ewan), Jen Reading and Erin Hobson. Regular posts to our page helps members stay informed and engaged with TCFQ activities. Over the year we had over 3,500 visits to our Facebook page and over 5,000 interactions (likes, reactions, saves comments shares and replies on our content).

Month	Visits	Interactions
2024		
Jul	341	590
Aug	348	402
Sep	304	602
Oct	214	307
Nov	364	569
Dec	390	605
2025		
Jan	316	640
Feb	336	375
Mar	277	109
Apr	190	225
May	156	173
Jun	281	498
Grand Total	3,517	5,095





Finances

I am pleased to report that we had another positive result for TCFQ finances, with good response to our fund raising and ongoing donations.

Profit and Loss Summary				
The Compassionate Friends Qld For the year ended 30 June 2025				
Account	2025	2024	Nett Change	Notes on change
Revenue				
Grants - Recurrent	54,363	52,302	3.9%	CPI increase
Grants - Non Recurrent	9,411	13,779	-31.7%	2025 Lord Mayors Grant only
Memberships	2,109	2,900	-27.3%	
Fund Raising	29,364	33,719	-12.9%	
Donations	21,673	30,898	-29.9%	
Finance Income	4,055	2,537	59.8%	Better interest rate on savings
Other Income	153	927	-83.5%	
Total Revenue	121,128	137,062	-11.6%	
Expenses				
Depreciation	2,423	1,813	33.6%	
Employee Benefits	41,028	44,962	-8.7%	
Events	3,235	3,907	-17.2%	
Fund Raising Costs	15,663	16,585	-5.6%	
Other Expenses	43,207	43,696	-1.1%	
Total Expenses	105,556	110,963	-4.9%	
Profit/Loss	15,572	26,099	-40.3%	

We are in the second year of our renewed service contract with Queensland Health, and those funds again represented biggest source of revenue.

We successfully applied for the Lord Mayors Grant which funded our Candle Lighting Service, and we also used the remainder of our Gambling Community Benefit Fund grant that we received in 2023/24 to purchase a portable projector

Our fund raising this year was helped not only by another excellent return from the Golf day but we benefited from additional one off donations from other voluntary organisations.

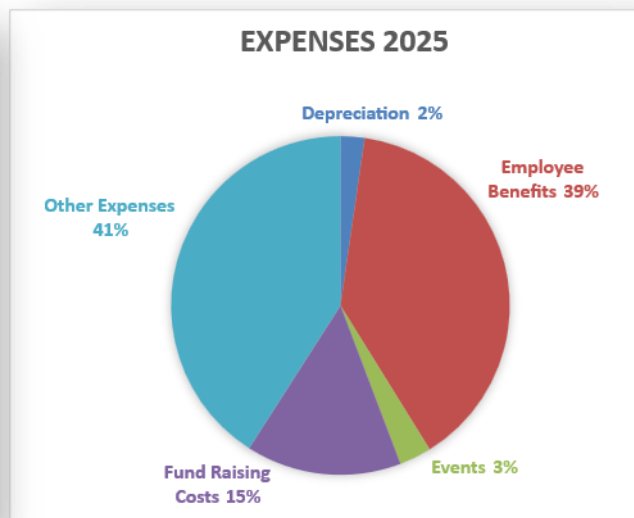
I thank all of our members and supporters who donated as part of our annual End of Financial Year Appeal. In particular, I would like to acknowledge the ongoing significant support we receive from David Pearce at MPS Insurance Brokers – David used to be a regular at our Golf Day and although he is no longer able to play – he continues to support us financially each year.



Donor List 2024/25

Name	In Memory of	Name	In Memory Of
Significant Donors			
Annie Moritz and Brian Wilson	Amy	Holland Park – Mt Gravatt RSL	
Leanne and Nicolas Roulant	Daniel	MPS Insurance Brokers Pty Ltd	
Desmond Rasmussen	Lee	Rhino Finance	
Carina Leagues Club		Vietnam Legion Veterans Association	
William Glynn		Rae Walker	
Regular Donors			
Veronica Althaus	Marc-Rian	Sue and Steve McBurnie	Larissa
Helen Balmer	Ashleigh	Heather Smith	Richard, Noel and James
Wendy and Jim Goulden	Paul	Trevor and Julie Taylor	Nicholas
Roger and Helen Grehan	Mitchell	Tony and Tania Vayro	Jayden
Other Donations			
Helen Alcock	Gregory	Rosemaree and Roy Murray	Jessica
Myra and John Ayre	Nicholas	Belinda Oberia	Jordan
Sharon Baxter	James	Beth O'Brien	
Kelly and Warren Briant	Lilah-Jane	Greg and Terri O'Connell	Nathan
Lyn Brighthouse	Leisa	Caroline Piddington	Jasper
Lynne Brown	Greg	Jennifer and Stephen Reading	Michael
Teri Chew and Peter Edwards	Samantha	Peter Ritchie	Ben
Amanda Clarke	Thomas	Anita Salter	Tully
Vaughan and Angela Coffey	Ashley	Robyn and Michael Scheer	Jacob
Marion Downey	Michael	Rebecca Skinner and Tony Eyles	Rainer
Marj and Dan Druckman	Kathy	Andrea and David Smith	Eli
Jocelyn and Glenn Dunn	Keenan	Kent and Karen Smith	Keenan
Chris Glass	Samuel	David Sumner-Pearce and Allan Roebuck	Desmond
Leah and David Gleeson	Beau	Deborah Tabart	Ben and Sam
Rob and Gloria Hamilton	Rodney	Julie Tam	Joshua
Peter and Erin Hobson	Brendan	Joanne Thomson	Ian
Janice and John Humphreys	Jodie	Noela Wilkes	Simon
Graeme Hunter	Nicholas	Andrew Woodward	Harrison
Mickaele and Pia Iese	Jin	GMN / Vegie Prepi	
Lyn and Graham Macklin	Benjamin	Paul Downey	
Mary and Duncan Maclean	Keira	Chamari Jayawardena	
Maureen Martin	Peter	TCFQ Office	
Helen and Anthony Masselos	Alec	Poornima Thiruchelvam	
Julie and Roy McGregor	Joel		

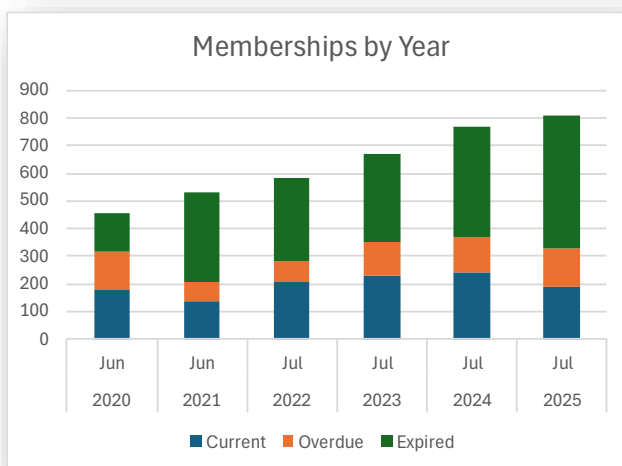
The following page shows a graphical breakdown of the expenses and revenue figures for the year, which is largely unchanged from the prior year.



Membership

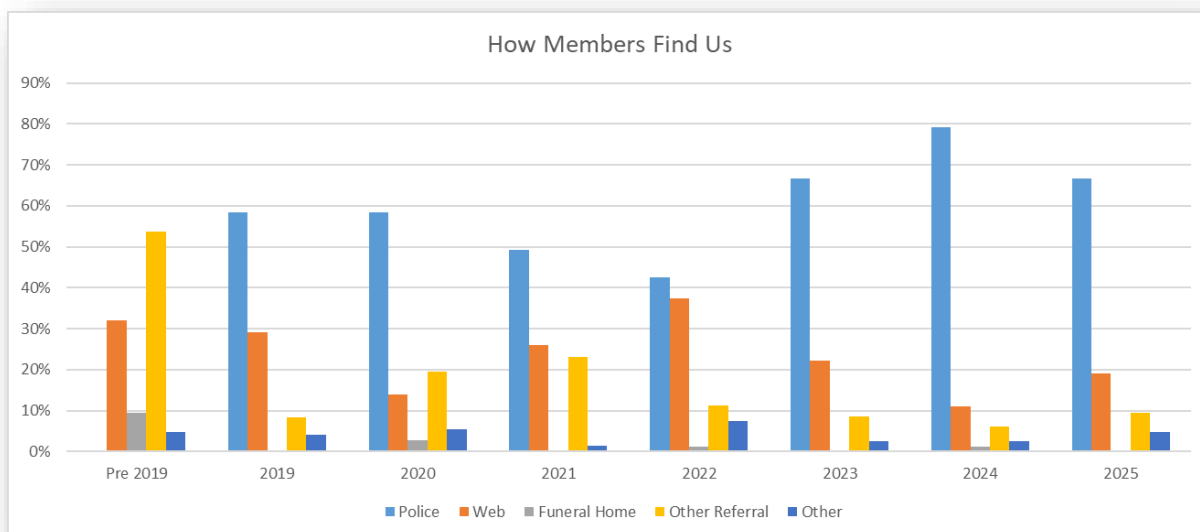
We have seen steady growth in the total number of memberships, nearly doubling over the past five years from June 2020 to June 2024 :

Year	Current	Overdue	Expired	Total
2020	175	143	138	456
2021	135	73	324	532
2022	208	72	301	581
2023	227	122	320	669
2024	243	124	404	771
2025	187	140	480	807





Despite the fall in police referrals, this remains the predominant way in which members find our services – with over half of new members in the past year being contacted through this channel.



A breakdown of membership by region is below

Region	Total	%
Brisbane	176	22%
Brisbane - East	55	7%
Brisbane - North	20	2%
Brisbane - South	29	4%
Brisbane Inner City	72	9%
South East Qld	373	46%
Gold Coast	69	9%
Ipswich	73	9%
Logan - Beaudesert	76	9%
Moreton Bay - North	43	5%
Moreton Bay - South	43	5%
Sunshine Coast	42	5%
Toowoomba	27	3%
Regional Qld	176	22%
Cairns	35	4%
Central Queensland	20	2%
Darling Downs - Maranoa	21	3%
Mackay - Isaac - Whitsunday	17	2%
Queensland - Outback	12	1%
Townsville	20	2%
Wide Bay	51	6%
Outside Qld	18	2%
Unknown	64	8%
Grand Total	807	100%



Partnerships

University of Queensland

This year we continued our collaboration with University of Queensland Department of Psychology through Dr Fiona Maccallum. This year a group of members participated in a focus group to explore the potential for use of Virtual Reality (VR) and Artificial Intelligence (AI) technology in the context of grief and bereavement. The aim was to allow participants to experience some of the capabilities of the technologies and to get our feedback on what the impacts (positive or negative) may be if they were used in a support context for the bereaved.

Participating in studies and workshops like these is a way for TCFQ to promote awareness of the needs of parents and families after the death of a child and to advise how the public, government, professionals, support services and employers can help meet those needs.

There were also concerns raised by members, particularly on the potential use of AI in a direct support context. TCF is based on peer support from lived experience, and fundamental to that is our belief in the power and healing of personal interactions. While the impact of technology in many aspects of our lives is inevitable and should be approached with caution, we can help to ensure that our voice and experience informs their development and use in the bereavement context.

This year we will be continuing to work with UQ, with a focus on the use of the technology to develop interactive models to assist in training professionals and better prepare them for dealing with the grief that accompanies the loss of a child.

Queensland Police Service

TCFQ provide support to newly bereaved families referred by the Queensland Police Service. In the 2025 financial year we handled 187 referrals from QPS – 94 were for parents, siblings and grandparents, and the remainder were on referred to other grief and bereavement services.

In October 2024, the QPS referral system changed to remove categories which were no longer supported by a state wide service provider. In particular this removed the main category under which we receive referrals

- Sudden Death Support: Support for family/friends following unexpected death

We still receive referrals under the categories of

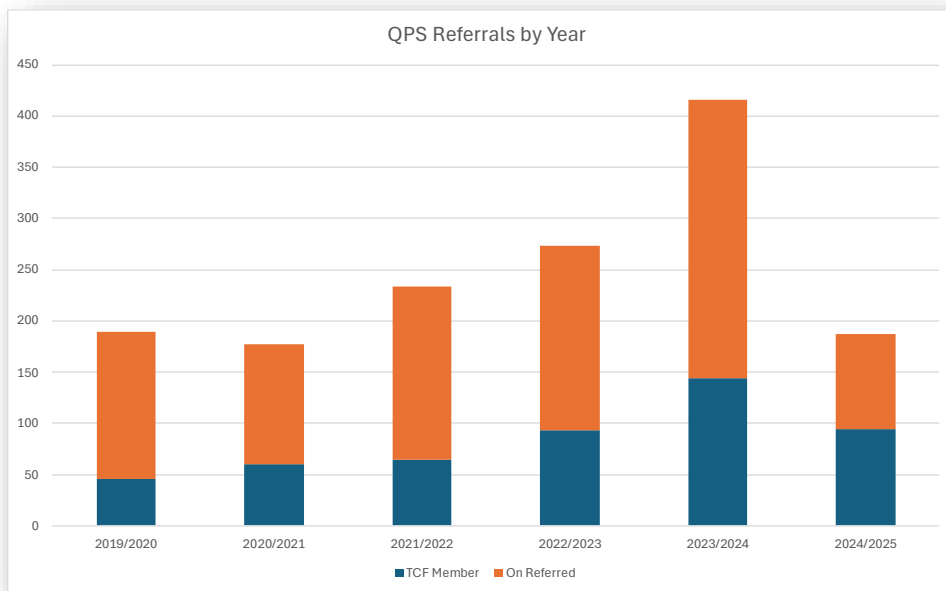
- Sudden Death Support : Support for family/friends related to death related to pregnancy or a child under age of 12yo
- Sudden Death Support: Support for family/friends following suicide

We have raised our concerns that this change may result in families need our support no longer being referred to TCFQ. In particular, only 25% of our membership is for families where the child is under 12.



This is supported by the statistics we keep on referrals which show a marked decrease in the last financial year

Financial Year	TCF Member	On Referred	Total Referrals
2019/2020	46	143	189
2020/2021	60	117	177
2021/2022	65	168	233
2022/2023	93	180	273
2023/2024	144	272	416
2024/2025	94	93	187
Total	502	973	1,475



Peter Hobson

President and father of Brendan